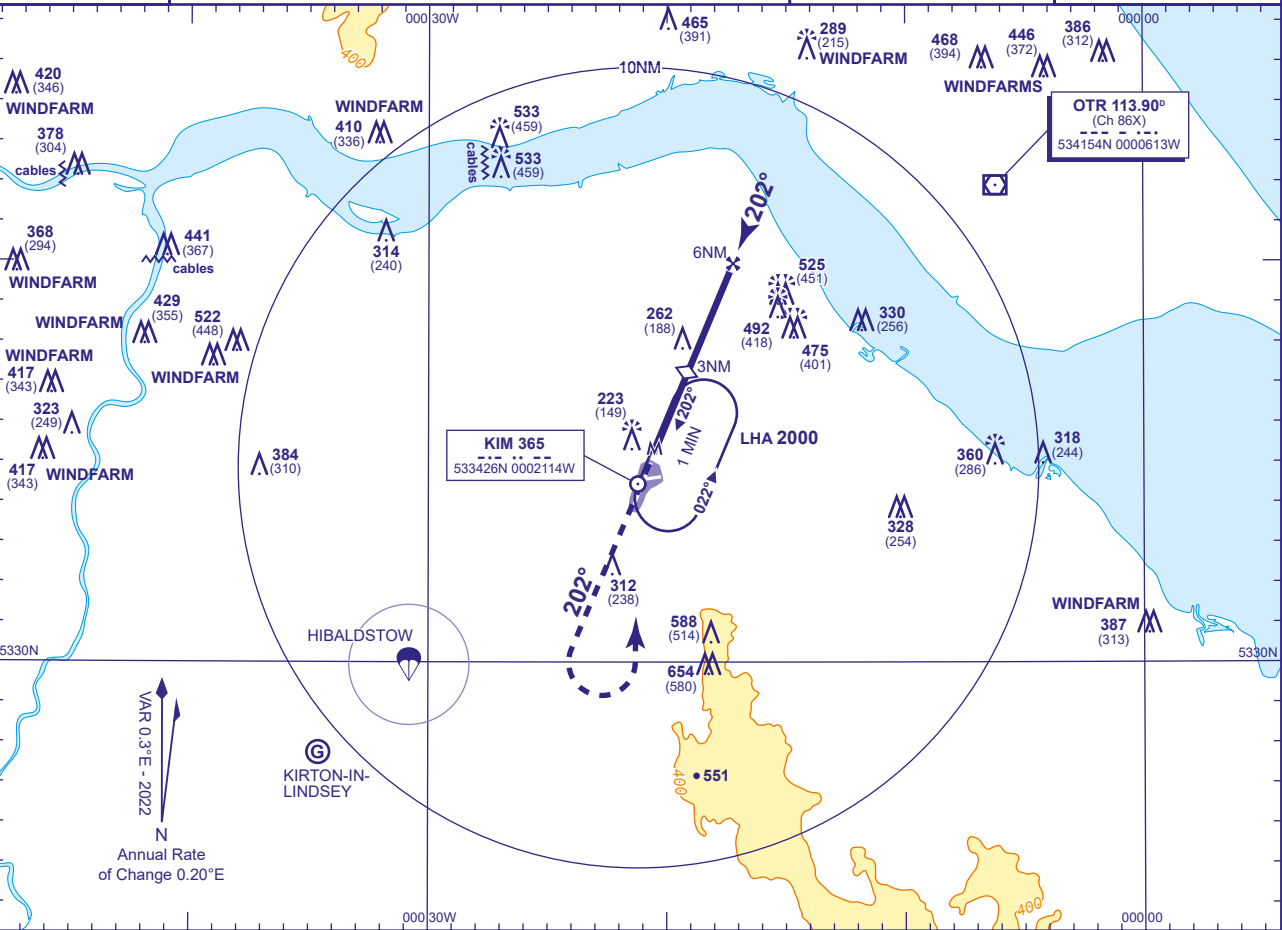


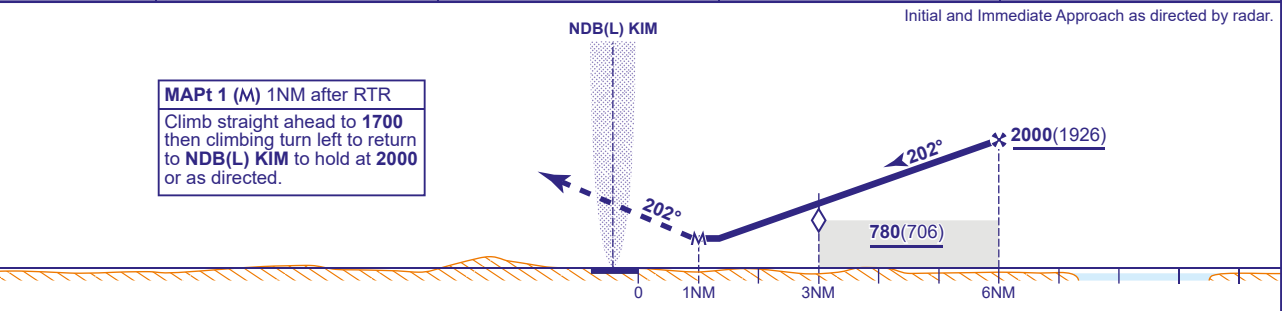
INSTRUMENT APPROACH CHART - ICAO

HUMBERSIDE
SRA RTR 2NM
RWY 20
(ACFT CAT A,B,C,D)

	APP	119.130	HUMBERSIDE APPROACH	AD ELEVATION	121	TRANSITION ALTITUDE 3000
	TWR	124.905, 119.130	HUMBERSIDE TOWER	THR ELEVATION	74	
	RAD	119.130, 129.255	HUMBERSIDE RADAR	OBSTACLE ELEVATION	654 AMSL (580) (ABOVE THR)	
	ATIS	124.130	HUMBERSIDE INFORMATION	BEARINGS ARE MAGNETIC		



RADAR ADVISORY HEIGHTS Gradient 5.2%, 320FT/NM				
NM	5.0	4.0	3.0 (SDF)	2.0
ALT(HGT)	1680(1606)	1360(1286)	1080(1006)	720(646)



Aircraft Category		A	B	C	D	Rate of descent	G/S KT	160	140	120	100	80
OCA (OCH)	Procedure	570(496)	570(496)	570(496)	570(496)		FT/MIN	860	750	640	530	430
VM(C)OCA (OCH AAL)	Total Area	690(569)	690(569)	990(869)	1050(929)	RTR to MAPt	MIN:SEC	0:22	0:25	0:30	0:36	0:45

CHANGE (5/24): OCA(OCH): VM(C)(OCH AAL) CAT A/B.